

Worklist: 816

<u>LAB_CASE</u>	<u>ITEM</u>	<u>TASK_ID</u>	<u>DESCRIPTION</u>	
M2015-2246	1	40435	6.1.2 Blood Cannabinoids by LC	
M2015-2307	1	40436	6.1.2 Blood Cannabinoids by LC	
M2015-2371	2	40437	6.1.2 Blood Cannabinoids by LC	
M2015-2494	1	40438	6.1.2 Blood Cannabinoids by LC	
M2015-2496	1	40439	6.1.2 Blood Cannabinoids by LC	
P2015-1535	1	40440	6.1.2 Blood Cannabinoids by LC	
P2015-1548	1	40441	6.1.2 Blood Cannabinoids by LC	
P2015-1550	1	40442	6.1.2 Blood Cannabinoids by LC	
P2015-1557	1	40443	6.1.2 Blood Cannabinoids by LC	
P2015-1571	1	40444	6.1.2 Blood Cannabinoids by LC	
P2015-1575	1	40445	6.1.2 Blood Cannabinoids by LC	
P2015-1607	1	40446	6.1.2 Blood Cannabinoids by LC	
P2015-1608	1	40447	6.1.2 Blood Cannabinoids by LC	
P2015-1656	1	40448	6.1.2 Blood Cannabinoids by LC	
P2015-1675	1	40449	6.1.2 Blood Cannabinoids by LC	
P2015-1726	1	40450	6.1.2 Blood Cannabinoids by LC	
P2015-1727	1	40451	6.1.2 Blood Cannabinoids by LC	

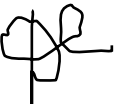


Reviewed 9/4/15



POC-AM 612 Blood-0909

Worklist Report



Worklist Path:	C:\MassHunter\ISP Methods\worklists\DD-B-CANN.wkl
Date Modified:	09/03/2015 08:28:05 AM
Date Printed:	09/03/2015 08:29:52 AM

Worklist Run Parameters

Verified that ALS vials were in the correct rack positions. NOTE: The comment "Validation" should have been removed from the worklist - this is not a validation run.

Operator Name:	62340
Run Type:	Standard Start
Part of Method to Run:	Acquisition Only
Execution for Acquisition-DA:	Synchronous
Acquisition Method Path:	C:\MassHunter\ISP Methods\Acquisition\Benzos_Z_Drugs_ACN_FA_ISP.m
DA Method Path:	D:\MassHunter\methods
Data File Path:	C:\MassHunter\Data\CANN\Validation\CANN-090215
Pre-Worklist Script:	---
Post-Worklist Script:	SCP_InstrumentStandby(){MH_Acq_Scripts.exe}
Acquisition Clean Up Script:	SCP_InstrumentStandby(){MH_Acq_Scripts.exe}
Overlapped Injection:	No
Clear sample selection after run:	Yes
Wait Time for Ready(Min):	10
Threshold Disk Value(GB):	10
Comment:	---

Plate Barcode Information


Plate	Barcode
P1	
P2	

Worklist Table

Sample Position	Sample Name	Method	Data File	Sample Type	Level Name	Comment	Info.
P1-A1	Blank	C:\MassHunter\ISP Methods\Acquisition\isp blood cannabinoids.m	Blank1-r001.d	Blank		Validation: Cannbinoids by LCQQQ	Blank
P1-A1	Blank	C:\MassHunter\ISP Methods\Acquisition\isp blood cannabinoids.m	Blank2-r001.d	Blank		Validation: Cannbinoids by LCQQQ	Blank
P1-A2	Blood: 1_5 ngmL	C:\MassHunter\ISP Methods\Acquisition\isp blood cannabinoids.m	B_CAL1-r001.d	Calibration	1	Validation: Cannbinoids by LCQQQ	c-THC @5ng/mL, all others @1 ng/mL
P1-A3	Blood: 2_10 ngmL	C:\MassHunter\ISP Methods\Acquisition\isp blood cannabinoids.m	B_CAL2_r001.d	Calibration	2	Validation: Cannbinoids by LCQQQ	c-THC @10ng/mL, all others @2 ng/mL
P1-A4			B_CAL3_r001.d	Calibration	3		2 of 24

Sample Position	Sample Name	Method	Data File	Sample Type	Level Name	Comment	Info.
	Blood: 5_25 ngmL	C:\MassHunter\ISP Methods\Acquisition\isp blood cannabinoids.m				Validation: Cannbinoids by LCQQQ	c-THC @25ng/mL, all others @5 ng/mL
P1-A5	Blood: 10_50 ngmL	C:\MassHunter\ISP Methods\Acquisition\isp blood cannabinoids.m	B_CAL4_r001.d	Calibration	4	Validation: Cannbinoids by LCQQQ	c-THC @50ng/mL, all others @10 ng/mL
P1-A	Blood: 25_125 ngmL	C:\MassHunter\ISP Methods\Acquisition\isp blood cannabinoids.m	B_CAL5_r001.d	Calibration	5	Validation: Cannbinoids by LCQQQ	c-THC @125ng/mL, all others @25 ng/mL
P1-A	Blood: 50_250 ngmL	C:\MassHunter\ISP Methods\Acquisition\isp blood cannabinoids.m	B_CAL_r001.d	Calibration		Validation: Cannbinoids by LCQQQ	c-THC @250ng/mL, all others @50 ng/mL
P1-A	Blood: 100_500 ngmL	C:\MassHunter\ISP Methods\Acquisition\isp blood cannabinoids.m	B_CAL_r001.d	Calibration		Validation: Cannbinoids by LCQQQ	c-THC @500ng/mL, all others @100 ng/mL
P1-A1	Blank	C:\MassHunter\ISP Methods\Acquisition\isp blood cannabinoids.m	Carryover blank1_r001.d	Blank		Validation: Cannbinoids by LCQQQ	
P1-A	Blood Negative Control	C:\MassHunter\ISP Methods\Acquisition\isp blood cannabinoids.m	B-NC-r001.d	Sample		Validation: Cannbinoids by LCQQQ	Negative Blood UTA Lot B0
P1-B1	Blood 3_15ngmL	C:\MassHunter\ISP Methods\Acquisition\isp blood cannabinoids.m	B-3_15-r001.d	Sample		Validation: Cannbinoids by LCQQQ	c-THC @15ng/mL, all others @3 ng/mL
P1-A	Blank M2015-224-1	C:\MassHunter\ISP Methods\Acquisition\isp blood cannabinoids.m	M2015-224-1_BL_r001.d	Blank		Validation: Cannbinoids by LCQQQ	
P1-B3	M2015-224-1	C:\MassHunter\ISP Methods\Acquisition\isp blood cannabinoids.m	M2015-224-1-r001.d	Sample		Validation: Cannbinoids by LCQQQ	Blood
P1-A	Blank M2015-230-1	C:\MassHunter\ISP Methods\Acquisition\isp blood cannabinoids.m	M2015-230-1_BL_r001.d	Blank		Validation: Cannbinoids by LCQQQ	
P1-B4	M2015-230-1	C:\MassHunter\ISP Methods\Acquisition\isp blood cannabinoids.m	M2015-230-1-r001.d	Sample		Validation: Cannbinoids by LCQQQ	Blood
P1-A	Blank M2015-231-2	C:\MassHunter\ISP Methods\Acquisition\isp blood cannabinoids.m	M2015-231-2_BL_r001.d	Blank		Validation: Cannbinoids by LCQQQ	
P1-B5	M2015-231-2	C:\MassHunter\ISP Methods\Acquisition\isp blood cannabinoids.m	M2015-231-2-r001.d	Sample		Validation: Cannbinoids by LCQQQ	Blood
P1-A	Blank M2015-244-1	C:\MassHunter\ISP Methods\Acquisition\isp blood cannabinoids.m	M2015-244-1_BL_r001.d	Blank		Validation: Cannbinoids by LCQQQ	
P1-B	M2015-244-1	C:\MassHunter\ISP Methods\Acquisition\isp blood cannabinoids.m	M2015-244-1-r001.d	Sample		Validation: Cannbinoids by LCQQQ	Blood
P1-A	Blank		Carryover blank2_r001.d	Blank			3 of 24

Sample Position	Sample Name	Method	Data File	Sample Type	Level Name	Comment	Info.
		C:\MassHunter\ISP Methods\Acquisition\isp blood cannabinoids.m				Validation: Cannbinoids by LCQQQ	
P1-B2	Blood 25_125ngmL	C:\MassHunter\ISP Methods\Acquisition\isp blood cannabinoids.m	B-25_125-r001.d	Sample		Validation: Cannbinoids by LCQQQ	c-THC @125ng/mL, all others @25 ng/mL
P1-A	Blank M2015-24-1	C:\MassHunter\ISP Methods\Acquisition\isp blood cannabinoids.m	M2015-24-1_BL_r001.d	Blank		Validation: Cannbinoids by LCQQQ	
P1-B	M2015-24-1	C:\MassHunter\ISP Methods\Acquisition\isp blood cannabinoids.m	M2015-24-1-r001.d	Sample		Validation: Cannbinoids by LCQQQ	Blood
P1-A	Blank P2015-1535-1	C:\MassHunter\ISP Methods\Acquisition\isp blood cannabinoids.m	P2015-1535-1_BL_r001.d	Blank		Validation: Cannbinoids by LCQQQ	
P1-B	P2015-1535-1	C:\MassHunter\ISP Methods\Acquisition\isp blood cannabinoids.m	P2015-1535-1-r001.d	Sample		Validation: Cannbinoids by LCQQQ	Blood
P1-A	Blank P2015-154-1	C:\MassHunter\ISP Methods\Acquisition\isp blood cannabinoids.m	P2015-154-1_BL_r001.d	Blank		Validation: Cannbinoids by LCQQQ	
P1-B	P2015-154-1	C:\MassHunter\ISP Methods\Acquisition\isp blood cannabinoids.m	P2015-154-1-r001.d	Sample		Validation: Cannbinoids by LCQQQ	Blood
P1-A	Blank P2015-1550-1	C:\MassHunter\ISP Methods\Acquisition\isp blood cannabinoids.m	P2015-1550-1_BL_r001.d	Blank		Validation: Cannbinoids by LCQQQ	
P1-C1	P2015-1550-1	C:\MassHunter\ISP Methods\Acquisition\isp blood cannabinoids.m	P2015-1550-1-r001.d	Sample		Validation: Cannbinoids by LCQQQ	Blood
P1-A	Blank P2015-155-1	C:\MassHunter\ISP Methods\Acquisition\isp blood cannabinoids.m	P2015-155-1_BL_r001.d	Blank		Validation: Cannbinoids by LCQQQ	
P1-C2	P2015-155-1	C:\MassHunter\ISP Methods\Acquisition\isp blood cannabinoids.m	P2015-155-1-r001.d	Sample		Validation: Cannbinoids by LCQQQ	Blood
P1-A	Blank P2015-151-1	C:\MassHunter\ISP Methods\Acquisition\isp blood cannabinoids.m	P2015-151-1_BL_r001.d	Blank		Validation: Cannbinoids by LCQQQ	
P1-C3	P2015-151-1	C:\MassHunter\ISP Methods\Acquisition\isp blood cannabinoids.m	P2015-151-1-r001.d	Sample		Validation: Cannbinoids by LCQQQ	Blood
P1-A	Blank P2015-155-1	C:\MassHunter\ISP Methods\Acquisition\isp blood cannabinoids.m	P2015-155-1_BL_r001.d	Blank		Validation: Cannbinoids by LCQQQ	
P1-C4	P2015-155-1	C:\MassHunter\ISP Methods\Acquisition\isp blood cannabinoids.m	P2015-155-1-r001.d	Sample		Validation: Cannbinoids by LCQQQ	Blood
P1-A	Blank P2015-10-1	C:\MassHunter\ISP Methods\Acquisition\isp blood cannabinoids.m	P2015-10-1_BL_r001.d	Blank		Validation: Cannbinoids by LCQQQ	
P1-C5	P2015-10-1	C:\MassHunter\ISP Methods\Acquisition\isp blood cannabinoids.m	P2015-10-1-r001.d	Sample		Validation: Cannbinoids by LCQQQ	Blood 4 of 24

Sample Position	Sample Name	Method	Data File	Sample Type	Level Name	Comment	Info.
P1-A	Blank P2015-10-1	C:\MassHunter\ISP Methods\Acquisition\isp blood cannabinoids.m	P2015-10-1_BL_r001.d	Blank		Validation: Cannbinoids by LCQQQ	
P1-C	P2015-10-1	C:\MassHunter\ISP Methods\Acquisition\isp blood cannabinoids.m	P2015-10-1-r001.d	Sample		Validation: Cannbinoids by LCQQQ	Blood
P1-A	Blank P2015-15-1	C:\MassHunter\ISP Methods\Acquisition\isp blood cannabinoids.m	P2015-15-1_BL_r001.d	Blank		Validation: Cannbinoids by LCQQQ	
P1-C	P2015-15-1	C:\MassHunter\ISP Methods\Acquisition\isp blood cannabinoids.m	P2015-15-1-r001.d	Sample		Validation: Cannbinoids by LCQQQ	Blood
P1-A	Blank P2015-15-1	C:\MassHunter\ISP Methods\Acquisition\isp blood cannabinoids.m	P2015-15-1_BL_r001.d	Blank		Validation: Cannbinoids by LCQQQ	
P1-C	P2015-15-1	C:\MassHunter\ISP Methods\Acquisition\isp blood cannabinoids.m	P2015-15-1-r001.d	Sample		Validation: Cannbinoids by LCQQQ	Blood
P1-A	Blank P2015-12-1	C:\MassHunter\ISP Methods\Acquisition\isp blood cannabinoids.m	P2015-12-1_BL_r001.d	Blank		Validation: Cannbinoids by LCQQQ	
P1-C	P2015-12-1	C:\MassHunter\ISP Methods\Acquisition\isp blood cannabinoids.m	P2015-12-1-r001.d	Sample		Validation: Cannbinoids by LCQQQ	Blood
P1-A	Blank P2015-12-1	C:\MassHunter\ISP Methods\Acquisition\isp blood cannabinoids.m	P2015-12-1_BL_r001.d	Blank		Validation: Cannbinoids by LCQQQ	
P1-D1	P2015-12-1	C:\MassHunter\ISP Methods\Acquisition\isp blood cannabinoids.m	P2015-12-1-r001.d	Sample		Validation: Cannbinoids by LCQQQ	Blood
P1-A1	Blank	C:\MassHunter\ISP Methods\Acquisition\isp blood cannabinoids.m	Blank3-r001.d	Blank		Validation: Cannbinoids by LCQQQ	
P1-A1	Blank	C:\MassHunter\ISP Methods\Acquisition\isp blood cannabinoids.m	Blank4-r001.d	Blank		Validation: Cannbinoids by LCQQQ	

ISP Forensics Calibration Curve Report



Batch Data Path C:\MassHunter\Data\CANN\Validation\CANN-090215\QuantResults\CANN-B-090215.batch.bin

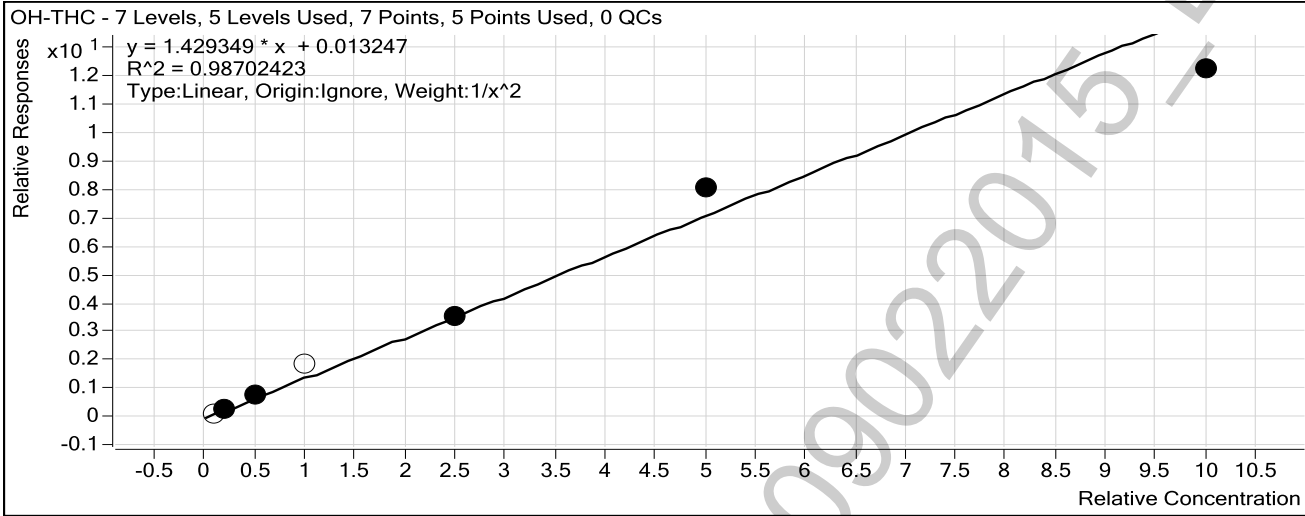
Last Calib Update 9/4/2015 11:08 AM

Analyst Name

ISP TOX

Target Compound OH-THC

Internal Standard OH-THC-d3



Sample	Level	Enabled	Exp Conc	Final Conc	Accuracy
Blood: 1_5 ng/mL	1	<input type="checkbox"/>	1	0.9	93.4
Blood: 2_10 ng/mL	2	<input checked="" type="checkbox"/>	2	2.0	97.9
Blood: 5_25 ng/mL	3	<input checked="" type="checkbox"/>	5	5.2	104.8
Blood: 10_50 ng/mL	4	<input type="checkbox"/>	10	12.9	129.0
Blood: 25_125 ng/mL	5	<input checked="" type="checkbox"/>	25	24.9	99.8
Blood: 50_250 ng/mL	6	<input checked="" type="checkbox"/>	50	56.1	112.2
Blood: 100_500 ng/mL	7	<input checked="" type="checkbox"/>	100	85.4	85.4

ISP Forensics Calibration Curve Report



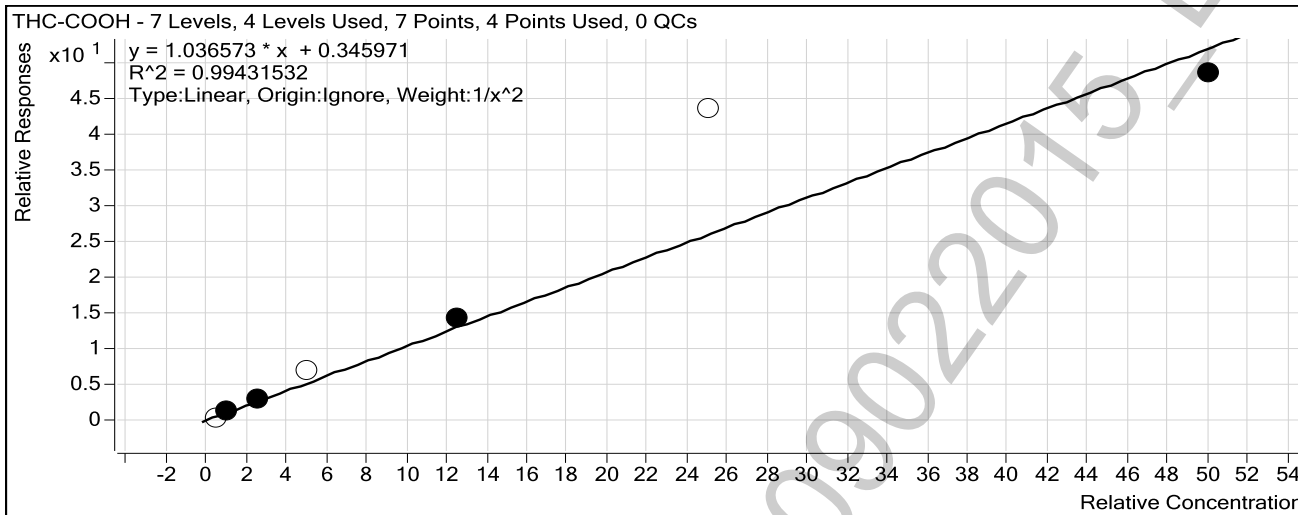
Batch Data Path C:\MassHunter\Data\CANN\Validation\CANN-090215\QuantResults\CANN-B-090215.batch.bin

Last Calib Update 9/4/2015 11:08 AM

Analyst Name ISP TOX

Target Compound *THC-COOH*

Internal Standard *THC-COOH-d3*



Sample	Level	Enabled	Exp Conc	Final Conc	Accuracy
Blood: 1_5 ng/mL	1	<input type="checkbox"/>	5	1.8	36.4
Blood: 2_10 ng/mL	2	<input checked="" type="checkbox"/>	10	10.0	99.7
Blood: 5_25 ng/mL	3	<input checked="" type="checkbox"/>	25	24.9	99.5
Blood: 10_50 ng/mL	4	<input type="checkbox"/>	50	65.9	131.7
Blood: 25_125 ng/mL	5	<input checked="" type="checkbox"/>	125	135.1	108.1
Blood: 50_250 ng/mL	6	<input type="checkbox"/>	250	416.2	166.5
Blood: 100_500 ng/mL	7	<input checked="" type="checkbox"/>	500	463.6	92.7

POC_AM 6.1.2 Blood - 09022015 - DND

ISP Forensics Calibration Curve Report



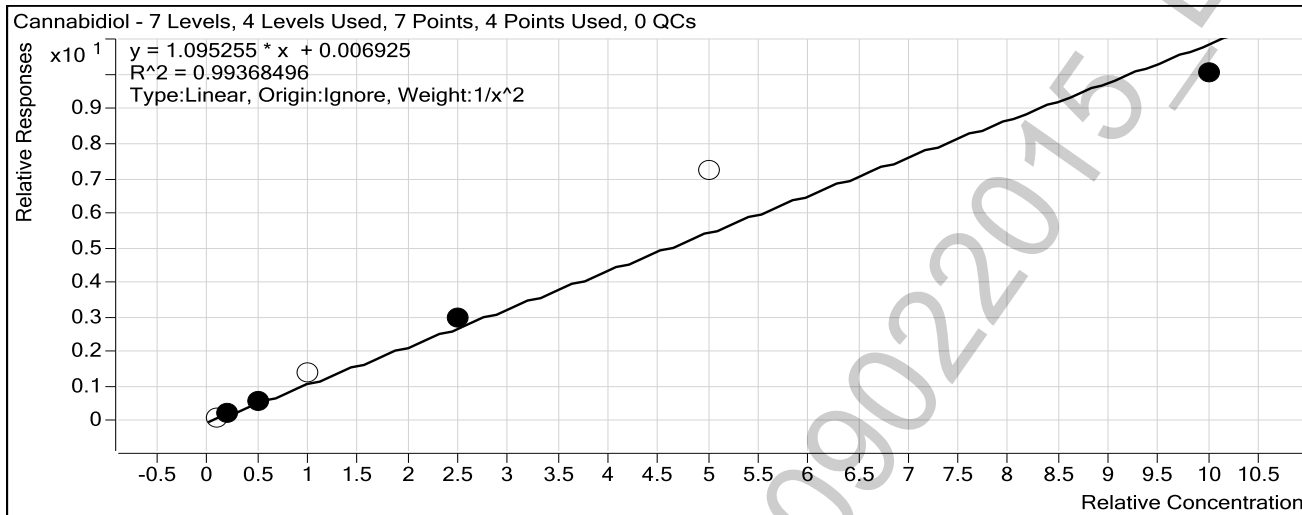
Batch Data Path C:\MassHunter\Data\CANN\Validation\CANN-090215\QuantResults\CANN-B-090215.batch.bin

Last Calib Update 9/4/2015 11:08 AM

Analyst Name ISP TOX

Target Compound *Cannabidiol*

Internal Standard *Cannabidiol-d3*



Sample	Level	Enabled	Exp Conc	Final Conc	Accuracy
Blood: 1_5 ng/mL	1	<input type="checkbox"/>	1	0.9	92.3
Blood: 2_10 ng/mL	2	<input checked="" type="checkbox"/>	2	2.0	98.4
Blood: 5_25 ng/mL	3	<input checked="" type="checkbox"/>	5	5.1	102.9
Blood: 10_50 ng/mL	4	<input type="checkbox"/>	10	12.4	124.5
Blood: 25_125 ng/mL	5	<input checked="" type="checkbox"/>	25	26.8	107.1
Blood: 50_250 ng/mL	6	<input type="checkbox"/>	50	65.9	131.7
Blood: 100_500 ng/mL	7	<input checked="" type="checkbox"/>	100	91.6	91.6

ISP Forensics Calibration Curve Report

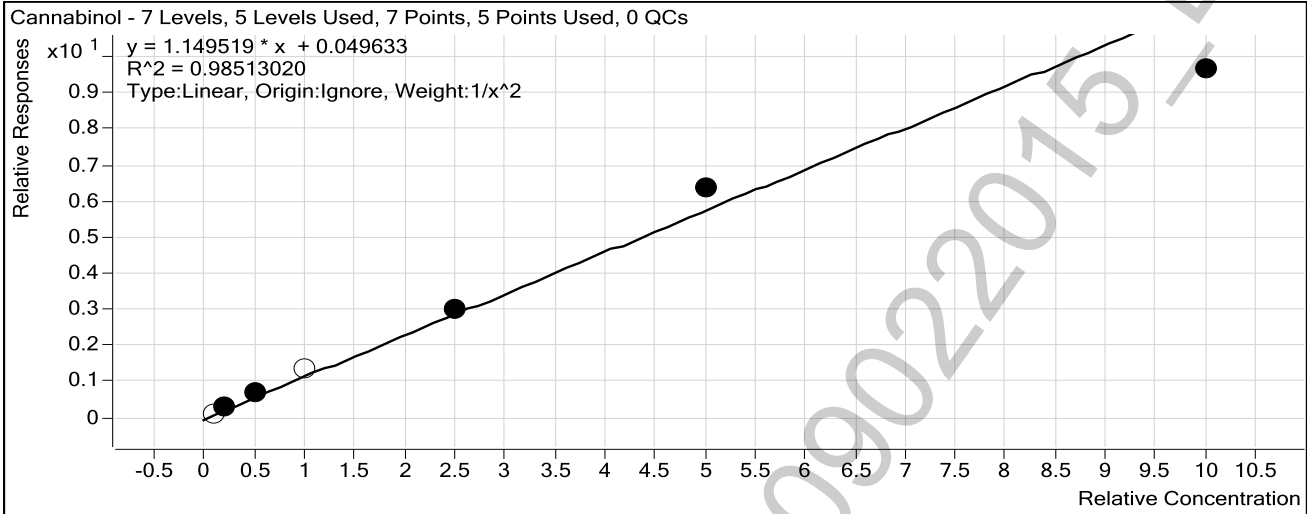


Batch Data Path C:\MassHunter\Data\CANN\Validation\CANN-090215\QuantResults\CANN-B-090215.batch.bin

Last Calib Update 9/4/2015 11:08 AM

Analyst Name ISP TOX

Target Compound *Cannabinol*
Internal Standard *Cannabinol-d3*



Sample	Level	Enabled	Exp Conc	Final Conc	Accuracy
Blood: 1_5 ng/mL	1	<input type="checkbox"/>	1	0.7	73.4
Blood: 2_10 ng/mL	2	<input checked="" type="checkbox"/>	2	1.9	96.6
Blood: 5_25 ng/mL	3	<input checked="" type="checkbox"/>	5	5.4	107.9
Blood: 10_50 ng/mL	4	<input type="checkbox"/>	10	11.3	112.5
Blood: 25_125 ng/mL	5	<input checked="" type="checkbox"/>	25	25.5	102.2
Blood: 50_250 ng/mL	6	<input checked="" type="checkbox"/>	50	54.9	109.8
Blood: 100_500 ng/mL	7	<input checked="" type="checkbox"/>	100	83.5	83.5

ISP Forensics Calibration Curve Report



Batch Data Path C:\MassHunter\Data\CANN\Validation\CANN-090215\QuantResults\CANN-B-090215.batch.bin

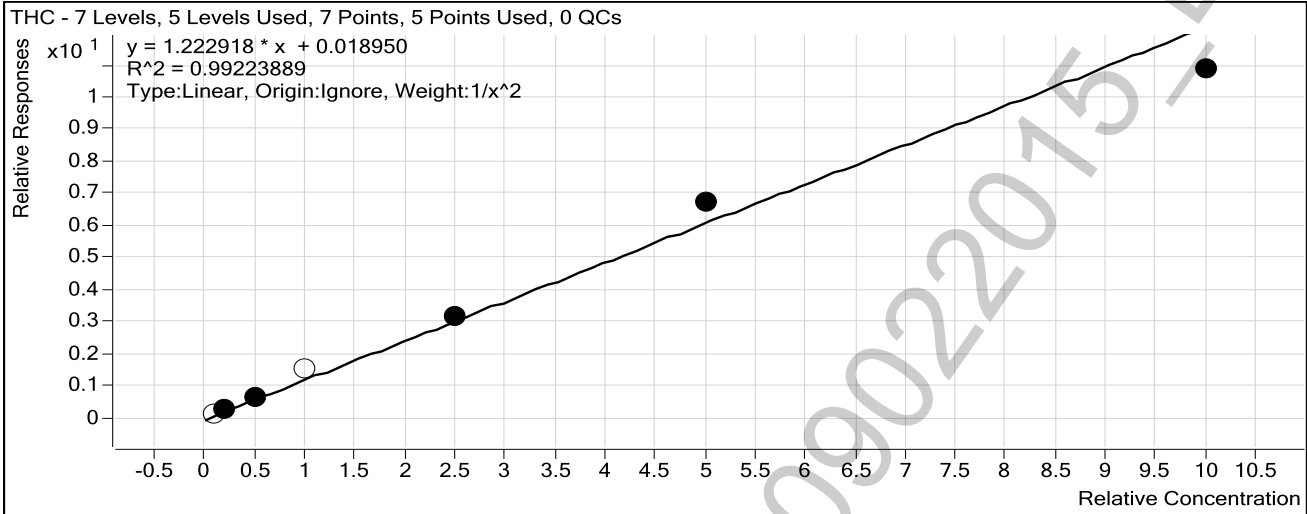
Last Calib Update 9/4/2015 11:08 AM

Analyst Name

ISP TOX

Target Compound THC

Internal Standard THC-d3



Sample	Level	Enabled	Exp Conc	Final Conc	Accuracy
Blood: 1_5 ng/mL	1	<input type="checkbox"/>	1	1.0	101.7
Blood: 2_10 ng/mL	2	<input checked="" type="checkbox"/>	2	2.0	100.4
Blood: 5_25 ng/mL	3	<input checked="" type="checkbox"/>	5	4.9	98.0
Blood: 10_50 ng/mL	4	<input type="checkbox"/>	10	12.4	123.6
Blood: 25_125 ng/mL	5	<input checked="" type="checkbox"/>	25	25.9	103.6
Blood: 50_250 ng/mL	6	<input checked="" type="checkbox"/>	50	54.7	109.3
Blood: 100_500 ng/mL	7	<input checked="" type="checkbox"/>	100	88.7	88.7

POC_AM 6.1.2 Blood - 09022015 - DND

ISP FORENSICS
Pocatello
Benzodiazepine Analysis Report

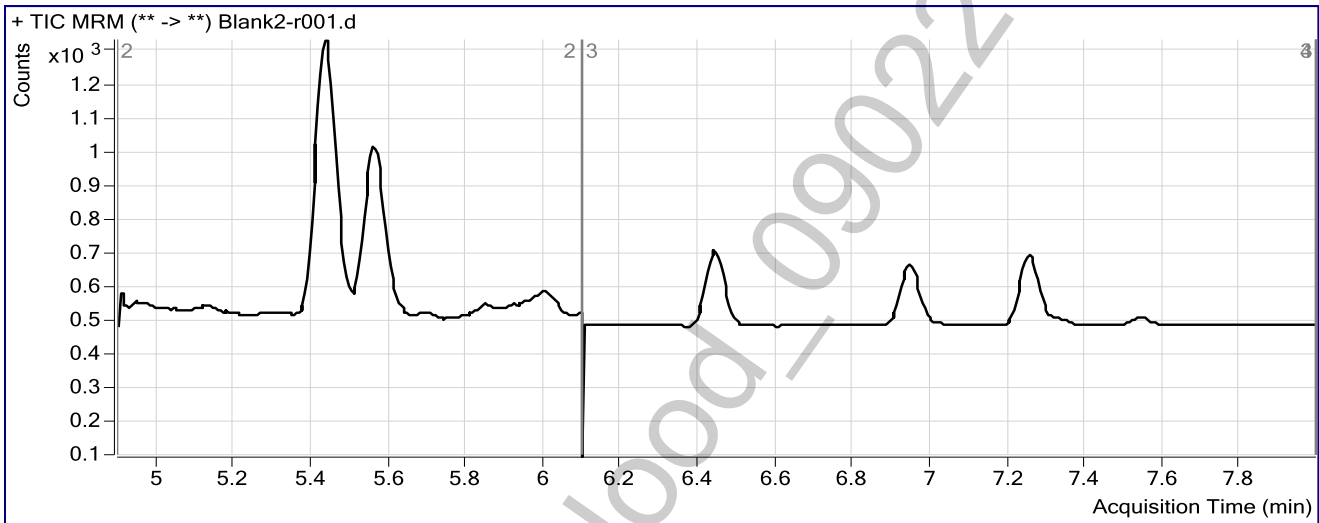


Batch Data Path	C:\MassHunter\Data\CANN\Validation\CANN-090215\QuantResults\CANN-B-090215.batch.bin		
Analysis Time	9/4/2015 11:08 AM	Analyst Name	ISPUser
Report Time	9/4/2015 11:11 AM	Reporter Name	ISPUser
Last Calib Update	9/4/2015 11:08 AM	Batch State	Processed

Analysis Info

Acq Time	2015-09-03 08:43	Data File	Blank2-r001.d
Sample Type	Blank	Sample Name	Blank
Dilution	1	Acq Method	isp blood cannabinoids.m
Position	P1-A1	Sample Info	Blank
Inj Vol	-1	Comment	Validation: Cannbinoids by LCQQQ

Sample Chromatogram



POC_AM 6.1.2 Blood - 09022015 - DND

ISP FORENSICS
Pocatello
Benzodiazepine Analysis Report

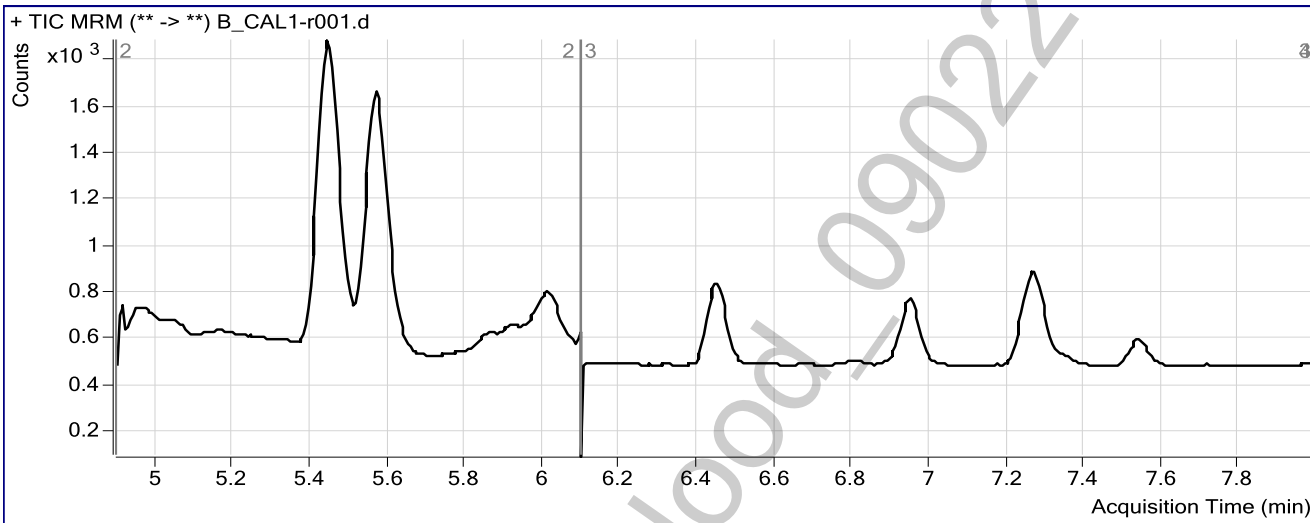


Batch Data Path C:\MassHunter\Data\CANN\Validation\CANN-090215\QuantResults\CANN-B-090215.batch.bin
Analysis Time 9/4/2015 11:08 AM **Analyst Name** ISPUser
Report Time 9/4/2015 11:11 AM **Reporter Name** ISPUser
Last Calib Update 9/4/2015 11:08 AM **Batch State** Processed

Analysis Info

Acq Time 2015-09-03 08:56 **Data File** B_CAL1-r001.d
Sample Type Calibration **Sample Name** Blood: 1_5 ng/mL
Dilution 1 **Acq Method** isp blood cannabinoids.m
Position P1-A2 **Sample Info** c-THC @5ng/mL, all others @1 ng/mL
Inj Vol -1 **Comment** Validation: Cannbinoids by LCQQQ

Sample Chromatogram



Results

Compound	ISTD Compound	RT	Response	ISTD Resp	Resp Ratio	Final Conc
OH-THC	OH-THC-d3	5.459	490	3339	0.1468	0.9342
THC-COOH	THC-COOH-d3	5.574	417	780	0.5346	1.8201
Cannabidiol	Cannabidiol-d3	6.454	54	499	0.1080	0.9233
Cannabinol	Cannabinol-d3	6.950	91	676	0.1340	0.7338
THC	THC-d3	7.267	90	628	0.1434	1.0173

ISP FORENSICS
Pocatello
Benzodiazepine Analysis Report

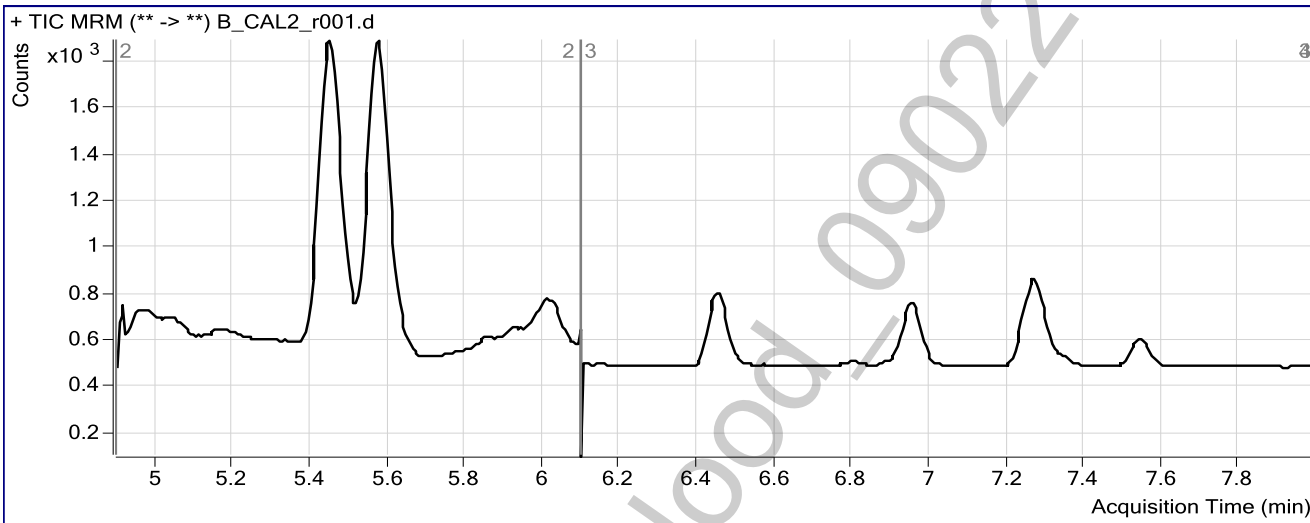


Batch Data Path C:\MassHunter\Data\CANN\Validation\CANN-090215\QuantResults\CANN-B-090215.batch.bin
Analysis Time 9/4/2015 11:08 AM **Analyst Name** ISUser
Report Time 9/4/2015 11:11 AM **Reporter Name** ISUser
Last Calib Update 9/4/2015 11:08 AM **Batch State** Processed

Analysis Info

Acq Time 2015-09-03 09:09 **Data File** B_CAL2_r001.d
Sample Type Calibration **Sample Name** Blood: 2_10 ng/mL
Dilution 1 **Acq Method** isp blood cannabinoids.m
Position P1-A3 **Sample Info** c-THC @10ng/mL, all others @2 ng/mL
Inj Vol -1 **Comment** Validation: Cannbinoids by LCQQQ

Sample Chromatogram



Results

Compound	ISTD Compound	RT	Response	ISTD Resp	Resp Ratio	Final Conc
OH-THC	OH-THC-d3	5.459	881	3005	0.2931	1.9579
THC-COOH	THC-COOH-d3	5.574	969	702	1.3793	9.9690
Cannabidiol	Cannabidiol-d3	6.454	85	384	0.2225	1.9687
Cannabinol	Cannabinol-d3	6.956	166	613	0.2717	1.9320
THC	THC-d3	7.272	140	530	0.2644	2.0072

ISP FORENSICS
Pocatello
Benzodiazepine Analysis Report

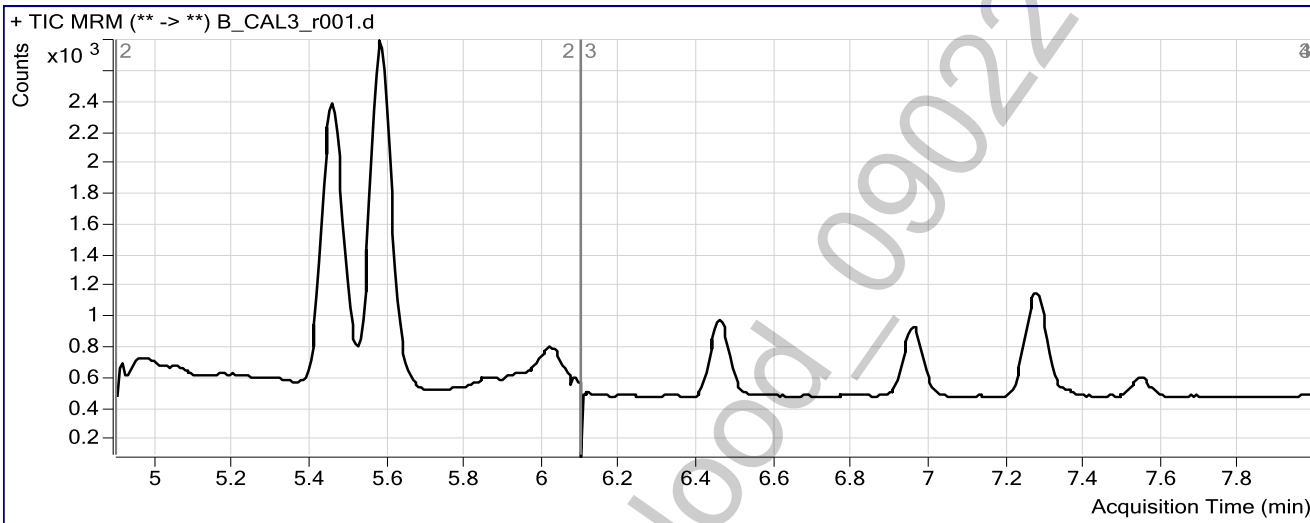


Batch Data Path C:\MassHunter\Data\CANN\Validation\CANN-090215\QuantResults\CANN-B-090215.batch.bin
Analysis Time 9/4/2015 11:08 AM **Analyst Name** ISPUser
Report Time 9/4/2015 11:11 AM **Reporter Name** ISPUser
Last Calib Update 9/4/2015 11:08 AM **Batch State** Processed

Analysis Info

Acq Time 2015-09-03 09:22 **Data File** B_CAL3_r001.d
Sample Type Calibration **Sample Name** Blood: 5_25 ng/mL
Dilution 1 **Acq Method** isp blood cannabinoids.m
Position P1-A4 **Sample Info** c-THC @25ng/mL, all others @5 ng/mL
Inj Vol -1 **Comment** Validation: Cannbinoids by LCQQQ

Sample Chromatogram



Results

Compound	ISTD Compound	RT	Response	ISTD Resp	Resp Ratio	Final Conc
OH-THC	OH-THC-d3	5.465	2340	3069	0.7625	5.2416
THC-COOH	THC-COOH-d3	5.579	2100	718	2.9251	24.8814
Cannabidiol	Cannabidiol-d3	6.460	284	498	0.5706	5.1463
Cannabinol	Cannabinol-d3	6.962	486	726	0.6698	5.3954
THC	THC-d3	7.272	424	685	0.6183	4.9007

ISP FORENSICS
Pocatello
Benzodiazepine Analysis Report

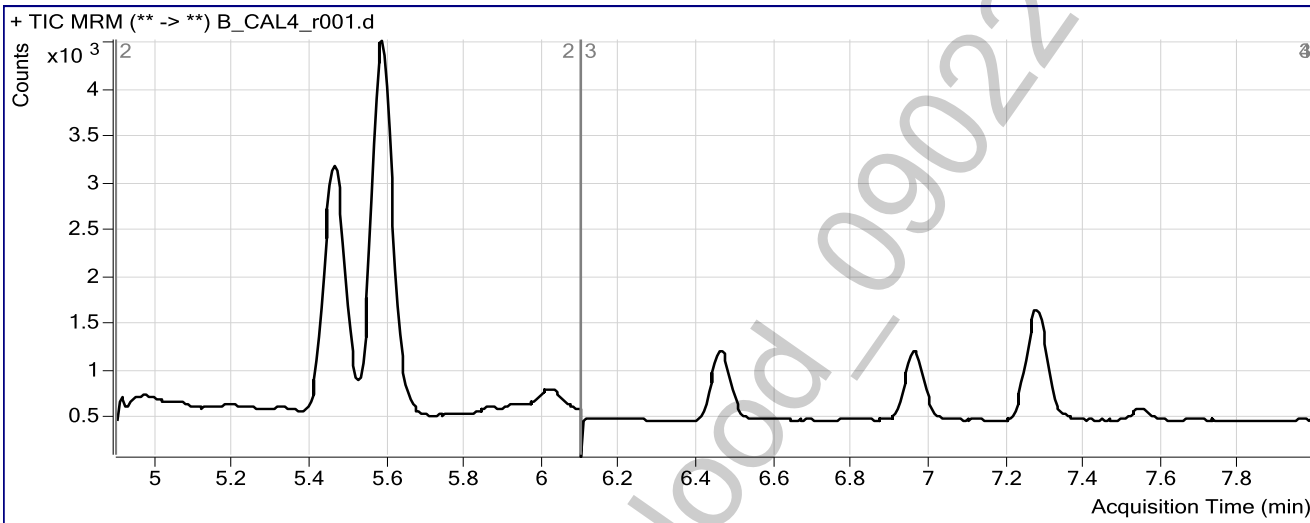


Batch Data Path C:\MassHunter\Data\CANN\Validation\CANN-090215\QuantResults\CANN-B-090215.batch.bin
Analysis Time 9/4/2015 11:08 AM **Analyst Name** ISPUser
Report Time 9/4/2015 11:11 AM **Reporter Name** ISPUser
Last Calib Update 9/4/2015 11:08 AM **Batch State** Processed

Analysis Info

Acq Time 2015-09-03 09:35 **Data File** B_CAL4_r001.d
Sample Type Calibration **Sample Name** Blood: 10_50 ng/mL
Dilution 1 **Acq Method** isp blood cannabinoids.m
Position P1-A5 **Sample Info** c-THC @50ng/mL, all others @10 ng/mL
Inj Vol -1 **Comment** Validation: Cannbinoids by LCQQQ

Sample Chromatogram



Results

Compound	ISTD Compound	RT	Response	ISTD Resp	Resp Ratio	Final Conc
OH-THC	OH-THC-d3	5.465	5011	2698	1.8571	12.9000
THC-COOH	THC-COOH-d3	5.585	4570	637	7.1736	65.8670
Cannabidiol	Cannabidiol-d3	6.460	630	460	1.3702	12.4472
Cannabinol	Cannabinol-d3	6.962	1082	805	1.3432	11.2531
THC	THC-d3	7.278	1109	724	1.5311	12.3648

ISP FORENSICS
Pocatello
Benzodiazepine Analysis Report

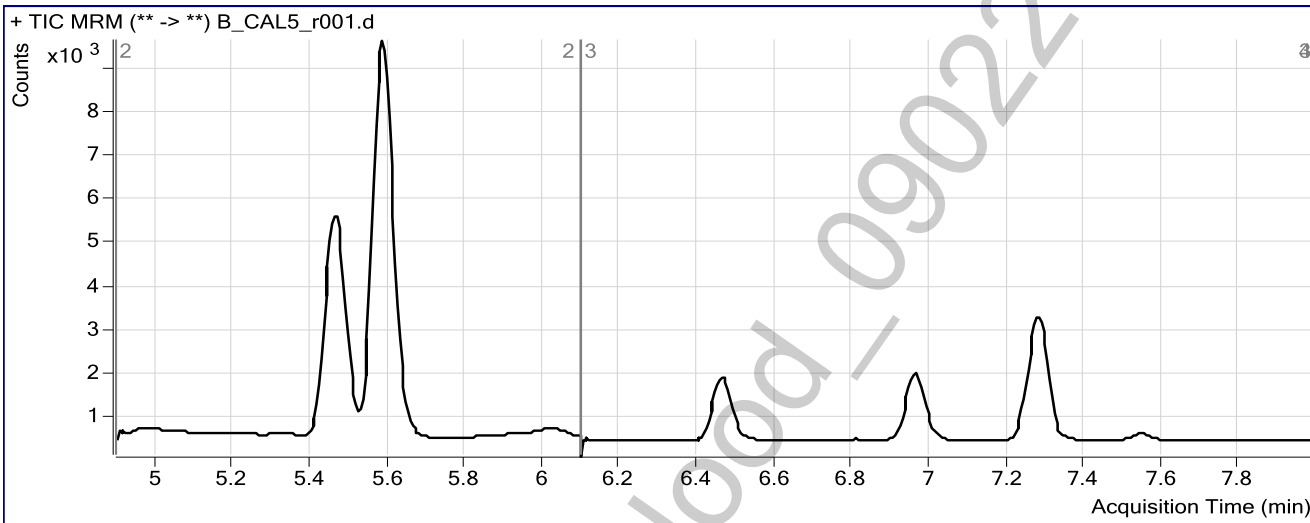


Batch Data Path C:\MassHunter\Data\CANN\Validation\CANN-090215\QuantResults\CANN-B-090215.batch.bin
Analysis Time 9/4/2015 11:08 AM **Analyst Name** ISPUser
Report Time 9/4/2015 11:11 AM **Reporter Name** ISPUser
Last Calib Update 9/4/2015 11:08 AM **Batch State** Processed

Analysis Info

Acq Time 2015-09-03 09:49 **Data File** B_CAL5_r001.d
Sample Type Calibration **Sample Name** Blood: 25_125 ng/mL
Dilution 1 **Acq Method** isp blood cannabinoids.m
Position P1-A6 **Sample Info** c-THC @125ng/mL, all others @25 ng/mL
Inj Vol -1 **Comment** Validation: Cannbinoids by LCQQQ

Sample Chromatogram



Results

Compound	ISTD Compound	RT	Response	ISTD Resp	Resp Ratio	Final Conc
OH-THC	OH-THC-d3	5.470	11616	3247	3.5778	24.9383
THC-COOH	THC-COOH-d3	5.585	11682	814	14.3484	135.0840
Cannabidiol	Cannabidiol-d3	6.460	1516	516	2.9383	26.7643
Cannabinol	Cannabinol-d3	6.962	2870	961	2.9864	25.5478
THC	THC-d3	7.278	3199	1004	3.1866	25.9022

ISP FORENSICS
Pocatello
Benzodiazepine Analysis Report

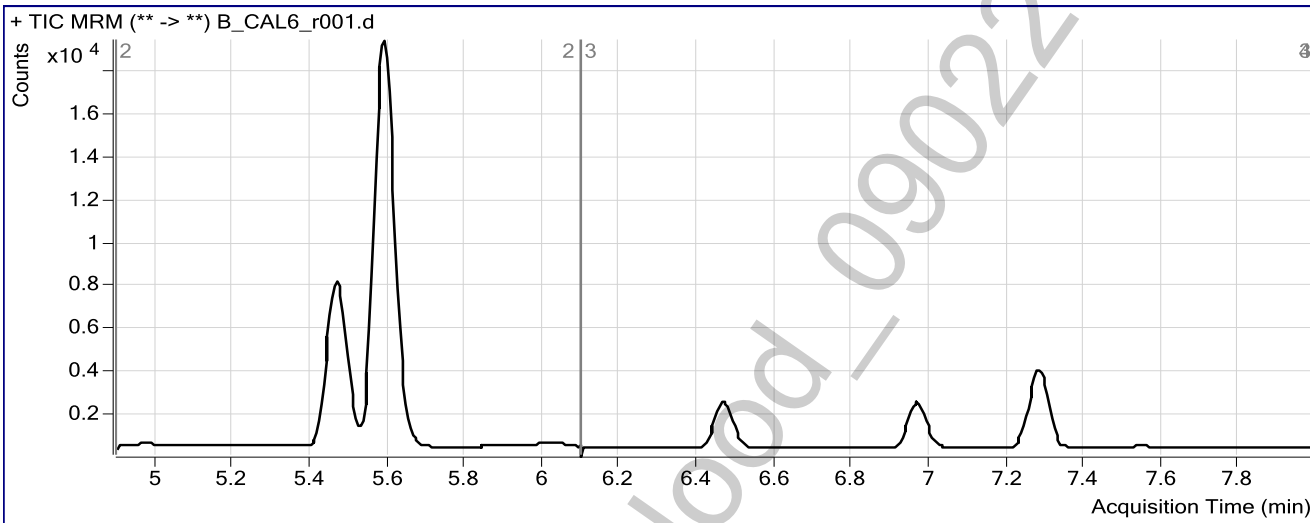


Batch Data Path C:\MassHunter\Data\CANN\Validation\CANN-090215\QuantResults\CANN-B-090215.batch.bin
Analysis Time 9/4/2015 11:08 AM **Analyst Name** ISPUser
Report Time 9/4/2015 11:11 AM **Reporter Name** ISPUser
Last Calib Update 9/4/2015 11:08 AM **Batch State** Processed

Analysis Info

Acq Time 2015-09-03 10:02 **Data File** B_CAL6_r001.d
Sample Type Calibration **Sample Name** Blood: 50_250 ng/mL
Dilution 1 **Acq Method** isp blood cannabinoids.m
Position P1-A7 **Sample Info** c-THC @250ng/mL, all others @50 ng/mL
Inj Vol -1 **Comment** Validation: Cannbinoids by LCQQQ

Sample Chromatogram



Results

Compound	ISTD Compound	RT	Response	ISTD Resp	Resp Ratio	Final Conc
OH-THC	OH-THC-d3	5.470	19775	2463	8.0297	56.0847
THC-COOH	THC-COOH-d3	5.591	25504	586	43.4931	416.2477
Cannabidiol	Cannabidiol-d3	6.466	2694	373	7.2203	65.8605
Cannabinol	Cannabinol-d3	6.967	4445	699	6.3618	54.9117
THC	THC-d3	7.278	4556	680	6.7044	54.6678

ISP FORENSICS
Pocatello
Benzodiazepine Analysis Report

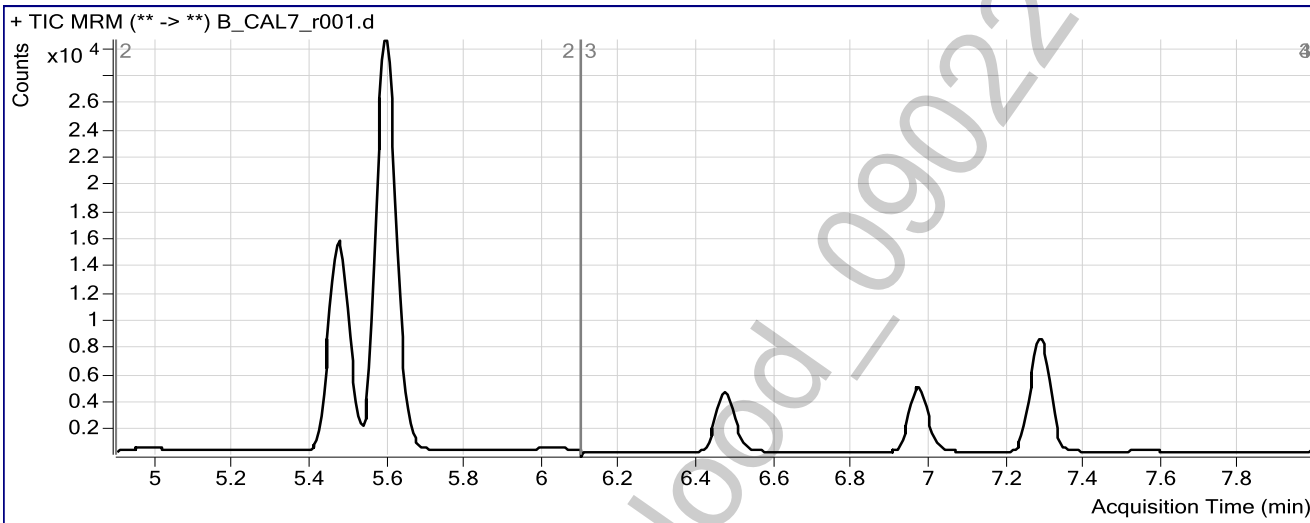


Batch Data Path C:\MassHunter\Data\CANN\Validation\CANN-090215\QuantResults\CANN-B-090215.batch.bin
Analysis Time 9/4/2015 11:08 AM **Analyst Name** ISPUser
Report Time 9/4/2015 11:11 AM **Reporter Name** ISPUser
Last Calib Update 9/4/2015 11:08 AM **Batch State** Processed

Analysis Info

Acq Time 2015-09-03 10:15 **Data File** B_CAL7_r001.d
Sample Type Calibration **Sample Name** Blood: 100_500 ng/mL
Dilution 1 **Acq Method** isp blood cannabinoids.m
Position P1-A8 **Sample Info** c-THC @500ng/mL, all others @100 ng/mL
Inj Vol -1 **Comment** Validation: Cannbinoids by LCQQQ

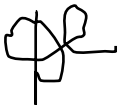
Sample Chromatogram



Results

Compound	ISTD Compound	RT	Response	ISTD Resp	Resp Ratio	Final Conc
OH-THC	OH-THC-d3	5.476	41606	3407	12.2131	85.3528
THC-COOH	THC-COOH-d3	5.596	41125	850	48.4000	463.5860
Cannabidiol	Cannabidiol-d3	6.471	5687	567	10.0377	91.5835
Cannabinol	Cannabinol-d3	6.973	10289	1067	9.6457	83.4790
THC	THC-d3	7.284	10907	1004	10.8641	88.6829

ISP FORENSICS
Pocatello
Benzodiazepine Analysis Report

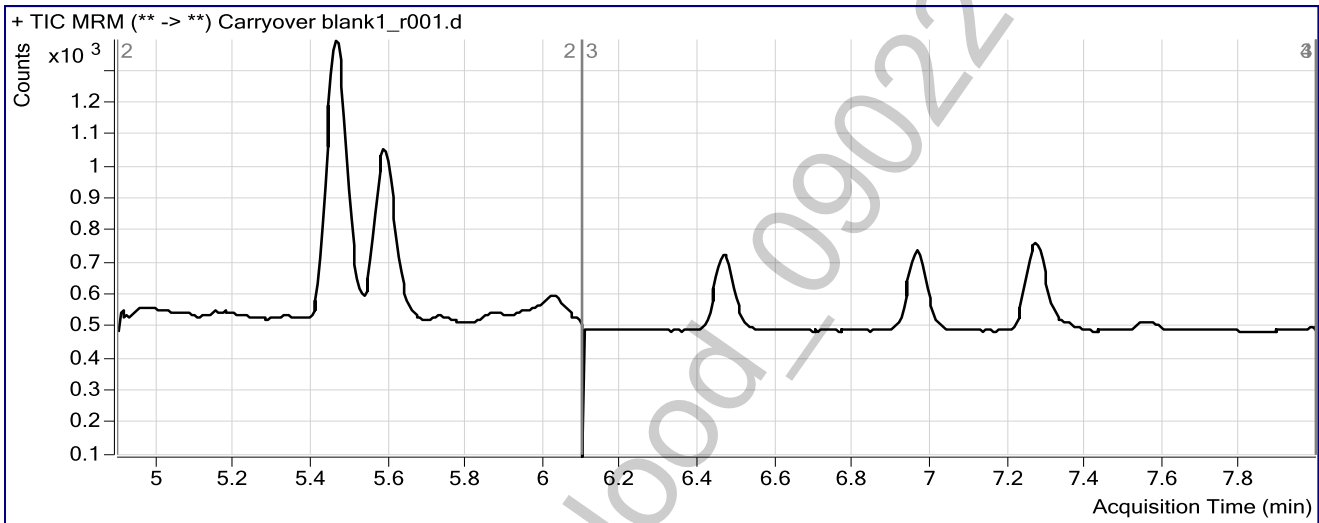


Batch Data Path	C:\MassHunter\Data\CANN\Validation\CANN-090215\QuantResults\CANN-B-090215.batch.bin		
Analysis Time	9/4/2015 11:08 AM	Analyst Name	ISPUser
Report Time	9/4/2015 11:11 AM	Reporter Name	ISPUser
Last Calib Update	9/4/2015 11:08 AM	Batch State	Processed

Analysis Info

Acq Time	2015-09-03 10:28	Data File	Carryover blank1_r001.d
Sample Type	Blank	Sample Name	Blank
Dilution	1	Acq Method	isp blood cannabinoids.m
Position	P1-A1	Sample Info	
Inj Vol	-1	Comment	Validation: Cannbinoids by LCQQQ

Sample Chromatogram



ISP FORENSICS
Pocatello
Benzodiazepine Analysis Report

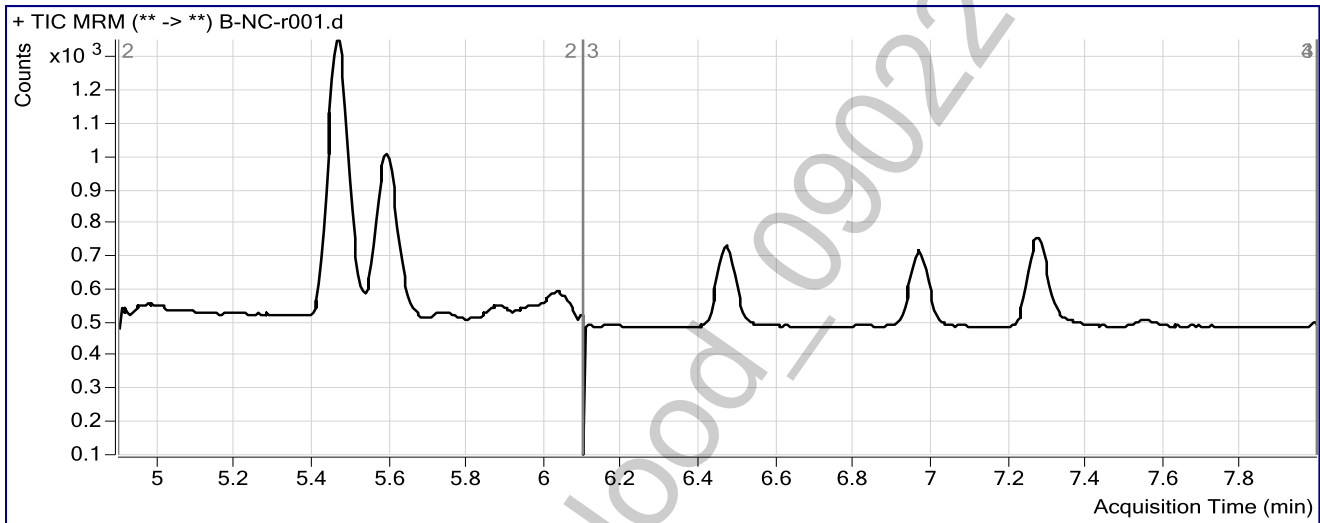


Batch Data Path	C:\MassHunter\Data\CANN\Validation\CANN-090215\QuantResults\CANN-B-090215.batch.bin		
Analysis Time	9/4/2015 11:08 AM	Analyst Name	ISPUser
Report Time	9/4/2015 11:11 AM	Reporter Name	ISPUser
Last Calib Update	9/4/2015 11:08 AM	Batch State	Processed

Analysis Info

Acq Time	2015-09-03 10:41	Data File	B-NC-r001.d
Sample Type	Sample	Sample Name	Blood Negative Control
Dilution	1	Acq Method	isp blood cannabinoids.m
Position	P1-A9	Sample Info	Negative Blood UTAK Lot B0689
Inj Vol	-1	Comment	Validation: Cannbinoids by LCQQQ

Sample Chromatogram



ISP FORENSICS
Pocatello
Benzodiazepine Analysis Report

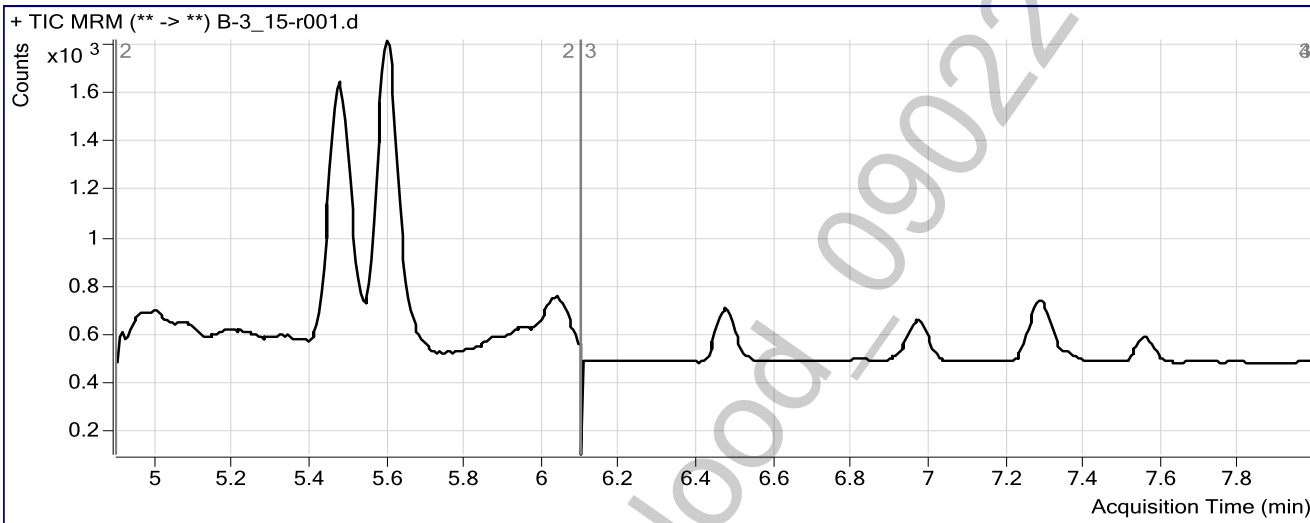


Batch Data Path C:\MassHunter\Data\CANN\Validation\CANN-090215\QuantResults\CANN-B-090215.batch.bin
Analysis Time 9/4/2015 11:08 AM **Analyst Name** ISPUser
Report Time 9/4/2015 11:11 AM **Reporter Name** ISPUser
Last Calib Update 9/4/2015 11:08 AM **Batch State** Processed

Analysis Info

Acq Time 2015-09-03 10:54 **Data File** B-3_15-r001.d
Sample Type Sample **Sample Name** Blood 3_15ng/mL
Dilution 1 **Acq Method** isp blood cannabinoids.m
Position P1-B1 **Sample Info** c-THC @15ng/mL, all others @3 ng/mL
Inj Vol -1 **Comment** Validation: Cannbinoids by LCQQQ

Sample Chromatogram



Results

Compound	ISTD Compound	RT	Response	ISTD Resp	Resp Ratio	Final Conc *
OH-THC	OH-THC-d3	5.481	1266	1824	0.6943	4.7645
THC-COOH	THC-COOH-d3	5.602	1044	441	2.3680	19.5065
Cannabidiol	Cannabidiol-d3	6.471	122	191	0.6394	5.7749
Cannabinol	Cannabinol-d3	6.973	201	290	0.6931	5.5980
THC	THC-d3	7.284	160	264	0.6066	4.8050

*No concentrations within 20% of the target value. However, all qualitative criteria were met and therefore valid for qualitative confirmation.

ISP FORENSICS
Pocatello
Benzodiazepine Analysis Report

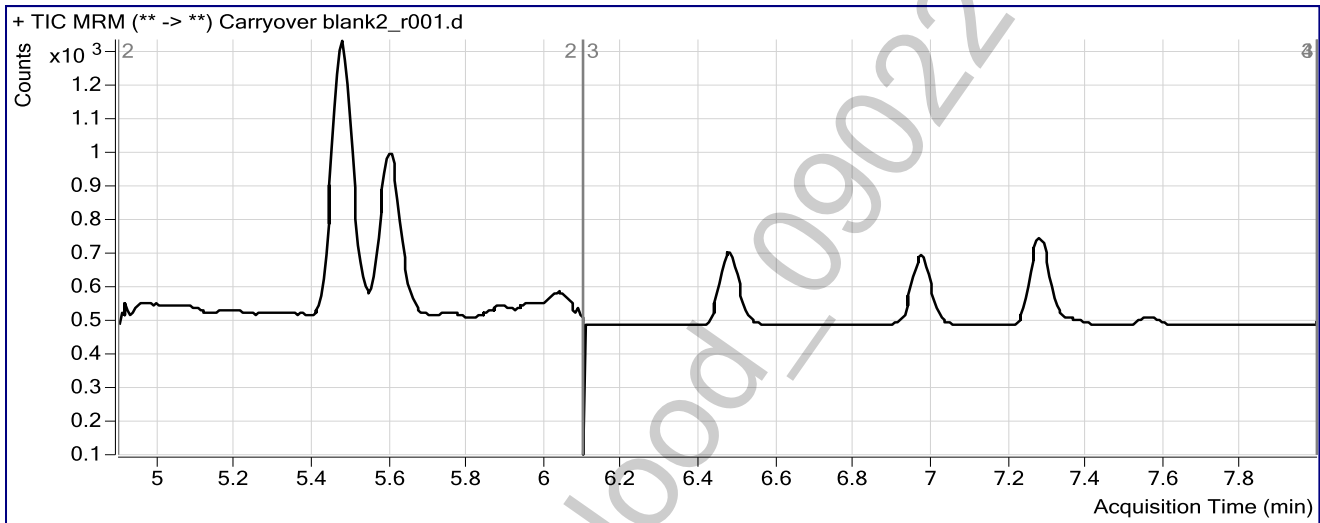


Batch Data Path	C:\MassHunter\Data\CANN\Validation\CANN-090215\QuantResults\CANN-B-090215.batch.bin		
Analysis Time	9/4/2015 11:08 AM	Analyst Name	ISPUser
Report Time	9/4/2015 11:11 AM	Reporter Name	ISPUser
Last Calib Update	9/4/2015 11:08 AM	Batch State	Processed

Analysis Info

Acq Time	2015-09-03 12:53	Data File	Carryover blank2_r001.d
Sample Type	Blank	Sample Name	Blank
Dilution	1	Acq Method	isp blood cannabinoids.m
Position	P1-A9	Sample Info	
Inj Vol	-1	Comment	Validation: Cannbinoids by LCQQQ

Sample Chromatogram



ISP FORENSICS
Pocatello
Benzodiazepine Analysis Report

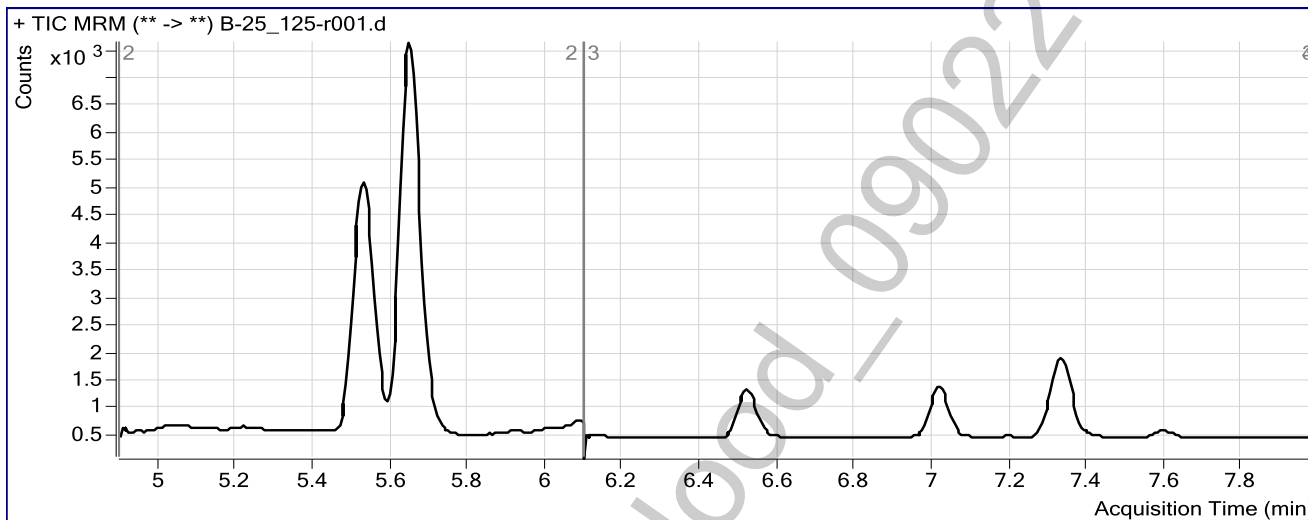


Batch Data Path C:\MassHunter\Data\CANN\Validation\CANN-090215\QuantResults\CANN-B-090215.batch.bin
Analysis Time 9/4/2015 11:08 AM **Analyst Name** ISPUser
Report Time 9/4/2015 11:11 AM **Reporter Name** ISPUser
Last Calib Update 9/4/2015 11:08 AM **Batch State** Processed

Analysis Info

Acq Time 2015-09-03 13:06 **Data File** B-25_125-r001.d
Sample Type Sample **Sample Name** Blood 25_125ngmL
Dilution 1 **Acq Method** isp blood cannabinoids.m
Position P1-B2 **Sample Info** c-THC @125ng/mL, all others @25 ng/mL
Inj Vol -1 **Comment** Validation: Cannbinoids by LCQQQ

Sample Chromatogram



Results

Compound	ISTD Compound	RT	Response	ISTD Resp	Resp Ratio	Final Conc
OH-THC	OH-THC-d3	5.532	10524	2568	4.0981	28.5782
THC-COOH	THC-COOH-d3	5.647	8995	704	12.7850	120.0014
Cannabidiol	Cannabidiol-d3	6.522	905	335	2.7039	24.6243
Cannabinol	Cannabinol-d3	7.018	1683	574	2.9331	25.0840
THC	THC-d3	7.328	1726	542	3.1822	25.8661

ISP FORENSICS
Pocatello
Benzodiazepine Analysis Report



Batch Data Path	C:\MassHunter\Data\CANN\Validation\CANN-090215\QuantResults\CANN-B-090215.batch.bin		
Analysis Time	9/4/2015 11:08 AM	Analyst Name	ISPUser
Report Time	9/4/2015 11:11 AM	Reporter Name	ISPUser
Last Calib Update	9/4/2015 11:08 AM	Batch State	Processed

Analysis Info

Acq Time	2015-09-04 10:37	Data File	Blank3-r001.d
Sample Type	Blank	Sample Name	Blank
Dilution	1	Acq Method	isp blood cannabinoids.m
Position	P1-A1	Sample Info	
Inj Vol	-1	Comment	Validation: Cannbinoids by LCQQQ

Sample Chromatogram

